

Vis rectifiée à épaulement similaire ISO 7379

Description de l'article/illustrations du produit



Description

Matière :

Acier ou Inox A2.

Finition :

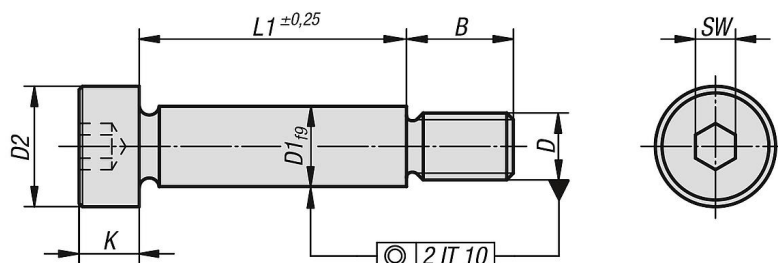
Classe de résistance 12.9, naturel. Diamètre ajusté rectifié.

Acier inoxydable naturel ou acier bruni.

Nota :

Les vis rectifiées à épaulement offrent plus de possibilités que les vis habituelles. Elles servent d'éléments de construction pour des applications multiples. Elles représentent souvent une solution économique en simplifiant la conception et créant un effet de rationalisation déterminant.

Dessins



Aperçu des articles

Vis rectifiée à épaulement similaire ISO 7379

Référence	Matière du corps de base	D1	D	D2	B	K	SW	L1
K0705.04X04	acier	4	M3	7	7	3	2	4
K0705.04X05	acier	4	M3	7	7	3	2	5
K0705.04X06	acier	4	M3	7	7	3	2	6
K0705.04X08	acier	4	M3	7	7	3	2	8
K0705.04X10	acier	4	M3	7	7	3	2	10
K0705.04X12	acier	4	M3	7	7	3	2	12
K0705.04X16	acier	4	M3	7	7	3	2	16
K0705.04X20	acier	4	M3	7	7	3	2	20
K0705.04X25	acier	4	M3	7	7	3	2	25
K0705.04X30	acier	4	M3	7	7	3	2	30
K0705.05X05	acier	5	M4	9	8	4	2,5	5
K0705.05X06	acier	5	M4	9	8	4	2,5	6
K0705.05X12	acier	5	M4	9	8	4	2,5	12
K0705.05X16	acier	5	M4	9	8	4	2,5	16
K0705.05X20	acier	5	M4	9	8	4	2,5	20
K0705.05X25	acier	5	M4	9	8	4	2,5	25
K0705.05X08	acier	5	M4	9	8	4	2,5	8
K0705.05X10	acier	5	M4	9	8	4	2,5	10
K0705.05X30	acier	5	M4	9	8	4	2,5	30
K0705.05X40	acier	5	M4	9	8	4	2,5	40
K0705.06X10	acier	6	M5	10	9,5	4,5	3	10
K0705.06X12	acier	6	M5	10	9,5	4,5	3	12

Vis rectifiée à épaulement similaire ISO 7379

Aperçu des articles

Référence	Matière du corps de base	D1	D	D2	B	K	SW	L1
K0705.06X16	acier	6	M5	10	9,5	4,5	3	16
K0705.06X20	acier	6	M5	10	9,5	4,5	3	20
K0705.06X25	acier	6	M5	10	9,5	4,5	3	25
K0705.06X30	acier	6	M5	10	9,5	4,5	3	30
K0705.06X35	acier	6	M5	10	9,5	4,5	3	35
K0705.06X40	acier	6	M5	10	9,5	4,5	3	40
K0705.06X45	acier	6	M5	10	9,5	4,5	3	45
K0705.06X50	acier	6	M5	10	9,5	4,5	3	50
K0705.06X55	acier	6	M5	10	9,5	4,5	3	55
K0705.06X60	acier	6	M5	10	9,5	4,5	3	60
K0705.06X65	acier	6	M5	10	9,5	4,5	3	65
K0705.06X70	acier	6	M5	10	9,5	4,5	3	70
K0705.06X80	acier	6	M5	10	9,5	4,5	3	80
K0705.08X16	acier	8	M6	13	11	5,5	4	16
K0705.08X20	acier	8	M6	13	11	5,5	4	20
K0705.08X25	acier	8	M6	13	11	5,5	4	25
K0705.08X30	acier	8	M6	13	11	5,5	4	30
K0705.08X40	acier	8	M6	13	11	5,5	4	40
K0705.08X45	acier	8	M6	13	11	5,5	4	45
K0705.08X50	acier	8	M6	13	11	5,5	4	50
K0705.08X55	acier	8	M6	13	11	5,5	4	55
K0705.08X60	acier	8	M6	13	11	5,5	4	60
K0705.08X65	acier	8	M6	13	11	5,5	4	65
K0705.08X70	acier	8	M6	13	11	5,5	4	70
K0705.08X80	acier	8	M6	13	11	5,5	4	80
K0705.08X90	acier	8	M6	13	11	5,5	4	90
K0705.08X100	acier	8	M6	13	11	5,5	4	100
K0705.10X16	acier	10	M8	16	13	7	5	16
K0705.10X20	acier	10	M8	16	13	7	5	20
K0705.10X25	acier	10	M8	16	13	7	5	25
K0705.10X30	acier	10	M8	16	13	7	5	30
K0705.10X35	acier	10	M8	16	13	7	5	35
K0705.10X40	acier	10	M8	16	13	7	5	40
K0705.10X45	acier	10	M8	16	13	7	5	45
K0705.10X50	acier	10	M8	16	13	7	5	50
K0705.10X55	acier	10	M8	16	13	7	5	55
K0705.10X60	acier	10	M8	16	13	7	5	60
K0705.10X65	acier	10	M8	16	13	7	5	65
K0705.10X70	acier	10	M8	16	13	7	5	70
K0705.10X80	acier	10	M8	16	13	7	5	80
K0705.10X90	acier	10	M8	16	13	7	5	90
K0705.10X100	acier	10	M8	16	13	7	5	100
K0705.12X100	acier	12	M10	18	16	9	6	100
K0705.12X16	acier	12	M10	18	16	9	6	16
K0705.12X20	acier	12	M10	18	16	9	6	20
K0705.12X25	acier	12	M10	18	16	9	6	25
K0705.12X30	acier	12	M10	18	16	9	6	30
K0705.12X35	acier	12	M10	18	16	8	6	35
K0705.12X40	acier	12	M10	18	16	9	6	40
K0705.12X45	acier	12	M10	18	16	8	6	45
K0705.12X50	acier	12	M10	18	16	9	6	50
K0705.12X55	acier	12	M10	18	16	8	6	55
K0705.12X60	acier	12	M10	18	16	9	6	60
K0705.12X65	acier	12	M10	18	16	8	6	65
K0705.12X70	acier	12	M10	18	16	9	6	70
K0705.12X80	acier	12	M10	18	16	9	6	80
K0705.12X90	acier	12	M10	18	16	9	6	90
K0705.16X100	acier	16	M12	24	18	11	8	100
K0705.16X120	acier	16	M12	24	18	11	8	120
K0705.16X25	acier	16	M12	24	18	11	8	25
K0705.16X30	acier	16	M12	24	18	11	8	30

Vis rectifiée à épaulement similaire ISO 7379

Aperçu des articles

Référence	Matière du corps de base	D1	D	D2	B	K	SW	L1
K0705.16X35	acier	16	M12	24	18	11	8	35
K0705.16X40	acier	16	M12	24	18	11	8	40
K0705.16X45	acier	16	M12	24	18	11	8	45
K0705.16X50	acier	16	M12	24	18	11	8	50
K0705.16X55	acier	16	M12	24	18	11	8	55
K0705.16X60	acier	16	M12	24	18	11	8	60
K0705.16X65	acier	16	M12	24	18	11	8	65
K0705.16X70	acier	16	M12	24	18	11	8	70
K0705.16X80	acier	16	M12	24	18	11	8	80
K0705.16X90	acier	16	M12	24	18	11	8	90
K0705.20X30	acier	20	M16	30	22	14	10	30
K0705.20X35	acier	20	M16	30	22	14	10	35
K0705.20X40	acier	20	M16	30	22	14	10	40
K0705.20X45	acier	20	M16	30	22	14	10	45
K0705.20X50	acier	20	M16	30	22	14	10	50
K0705.20X55	acier	20	M16	30	22	14	10	55
K0705.20X60	acier	20	M16	30	22	14	10	60
K0705.20X65	acier	20	M16	30	22	14	10	65
K0705.20X70	acier	20	M16	30	22	14	10	70
K0705.20X80	acier	20	M16	30	22	14	10	80
K0705.20X90	acier	20	M16	30	22	14	10	90
K0705.20X100	acier	20	M16	30	22	14	10	100
K0705.20X120	acier	20	M16	30	22	14	10	120
K0705.24X50	acier	24	M20	36	27	16	12	50
K0705.24X55	acier	24	M20	36	27	16	12	55
K0705.24X60	acier	24	M20	36	27	16	12	60
K0705.24X65	acier	24	M20	36	27	16	12	65
K0705.24X70	acier	24	M20	36	27	16	12	70
K0705.24X80	acier	24	M20	36	27	16	12	80
K0705.24X90	acier	24	M20	36	27	16	12	90
K0705.24X100	acier	24	M20	36	27	16	12	100
K0705.104X04	acier inoxydable A2	4	M3	7	7	3	2	4
K0705.104X05	acier inoxydable A2	4	M3	7	7	3	2	5
K0705.104X06	acier inoxydable A2	4	M3	7	7	3	2	6
K0705.104X08	acier inoxydable A2	4	M3	7	7	3	2	8
K0705.104X10	acier inoxydable A2	4	M3	7	7	3	2	10
K0705.104X12	acier inoxydable A2	4	M3	7	7	3	2	12
K0705.104X16	acier inoxydable A2	4	M3	7	7	3	2	16
K0705.104X20	acier inoxydable A2	4	M3	7	7	3	2	20
K0705.105X05	acier inoxydable A2	5	M4	9	8	4	2,5	5
K0705.105X06	acier inoxydable A2	5	M4	9	8	4	2,5	6
K0705.105X08	acier inoxydable A2	5	M4	9	8	4	2,5	8
K0705.105X10	acier inoxydable A2	5	M4	9	8	4	2,5	10
K0705.105X12	acier inoxydable A2	5	M4	9	8	4	2,5	12
K0705.105X16	acier inoxydable A2	5	M4	9	8	4	2,5	16
K0705.105X20	acier inoxydable A2	5	M4	9	8	4	2,5	20
K0705.105X25	acier inoxydable A2	5	M4	9	8	4	2,5	25
K0705.105X30	acier inoxydable A2	5	M4	9	8	4	2,5	30
K0705.105X40	acier inoxydable A2	5	M4	9	8	4	2,5	40
K0705.106X10	acier inoxydable A2	6	M5	10	9,5	4,5	3	10
K0705.106X12	acier inoxydable A2	6	M5	10	9,5	4,5	3	12
K0705.106X16	acier inoxydable A2	6	M5	10	9,5	4,5	3	16
K0705.106X20	acier inoxydable A2	6	M5	10	9,5	4,5	3	20
K0705.106X25	acier inoxydable A2	6	M5	10	9,5	4,5	3	25
K0705.106X30	acier inoxydable A2	6	M5	10	9,5	4,5	3	30
K0705.106X40	acier inoxydable A2	6	M5	10	9,5	4,5	3	40
K0705.106X50	acier inoxydable A2	6	M5	10	9,5	4,5	3	50
K0705.106X60	acier inoxydable A2	6	M5	10	9,5	4,5	3	60
K0705.108X16	acier inoxydable A2	8	M6	13	11	5,5	4	16
K0705.108X20	acier inoxydable A2	8	M6	13	11	5,5	4	20
K0705.108X25	acier inoxydable A2	8	M6	13	11	5,5	4	25

Vis rectifiée à épaulement similaire ISO 7379

Aperçu des articles

Référence	Matière du corps de base	D1	D	D2	B	K	SW	L1
K0705.108X30	acier inoxydable A2	8	M6	13	11	5,5	4	30
K0705.108X40	acier inoxydable A2	8	M6	13	11	5,5	4	40
K0705.108X50	acier inoxydable A2	8	M6	13	11	5,5	4	50
K0705.108X60	acier inoxydable A2	8	M6	13	11	5,5	4	60
K0705.110X16	acier inoxydable A2	10	M8	16	13	7	5	16
K0705.110X20	acier inoxydable A2	10	M8	16	13	7	5	20
K0705.110X25	acier inoxydable A2	10	M8	16	13	7	5	25
K0705.110X30	acier inoxydable A2	10	M8	16	13	7	5	30
K0705.110X40	acier inoxydable A2	10	M8	16	13	7	5	40
K0705.110X50	acier inoxydable A2	10	M8	16	13	7	5	50
K0705.110X60	acier inoxydable A2	10	M8	16	13	7	5	60
K0705.110X70	acier inoxydable A2	10	M8	16	13	7	5	70
K0705.110X80	acier inoxydable A2	10	M8	16	13	7	5	80
K0705.110X90	acier inoxydable A2	10	M8	16	13	7	5	90
K0705.110X100	acier inoxydable A2	10	M8	16	13	7	5	100
K0705.112X16	acier inoxydable A2	12	M10	18	16	9	6	16
K0705.112X20	acier inoxydable A2	12	M10	18	16	9	6	20
K0705.112X25	acier inoxydable A2	12	M10	18	16	9	6	25
K0705.112X30	acier inoxydable A2	12	M10	18	16	9	6	30
K0705.112X40	acier inoxydable A2	12	M10	18	16	9	6	40
K0705.112X50	acier inoxydable A2	12	M10	18	16	9	6	50
K0705.112X60	acier inoxydable A2	12	M10	18	16	9	6	60
K0705.112X70	acier inoxydable A2	12	M10	18	16	9	6	70
K0705.112X80	acier inoxydable A2	12	M10	18	16	9	6	80
K0705.112X90	acier inoxydable A2	12	M10	18	16	9	6	90
K0705.112X100	acier inoxydable A2	12	M10	18	16	9	6	100
K0705.116X30	acier inoxydable A2	16	M12	24	18	11	8	30
K0705.116X40	acier inoxydable A2	16	M12	24	18	11	8	40
K0705.116X50	acier inoxydable A2	16	M12	24	18	11	8	50
K0705.116X60	acier inoxydable A2	16	M12	24	18	11	8	60
K0705.116X70	acier inoxydable A2	16	M12	24	18	11	8	70
K0705.116X80	acier inoxydable A2	16	M12	24	18	11	8	80
K0705.116X90	acier inoxydable A2	16	M12	24	18	11	8	90
K0705.116X100	acier inoxydable A2	16	M12	24	18	11	8	100
K0705.116X120	acier inoxydable A2	16	M12	24	18	11	8	120
K0705.120X30	acier inoxydable A2	20	M16	30	22	14	10	30
K0705.120X40	acier inoxydable A2	20	M16	30	22	14	10	40
K0705.120X50	acier inoxydable A2	20	M16	30	22	14	10	50
K0705.120X60	acier inoxydable A2	20	M16	30	22	14	10	60
K0705.120X70	acier inoxydable A2	20	M16	30	22	14	10	70
K0705.120X80	acier inoxydable A2	20	M16	30	22	14	10	80
K0705.120X90	acier inoxydable A2	20	M16	30	22	14	10	90
K0705.120X100	acier inoxydable A2	20	M16	30	22	14	10	100
K0705.120X120	acier inoxydable A2	20	M16	30	22	14	10	120