

Ecrou croisillon similaire à DIN 6335, forme L avec filetage

Description de l'article/illustrations du produit



Description

Matière :

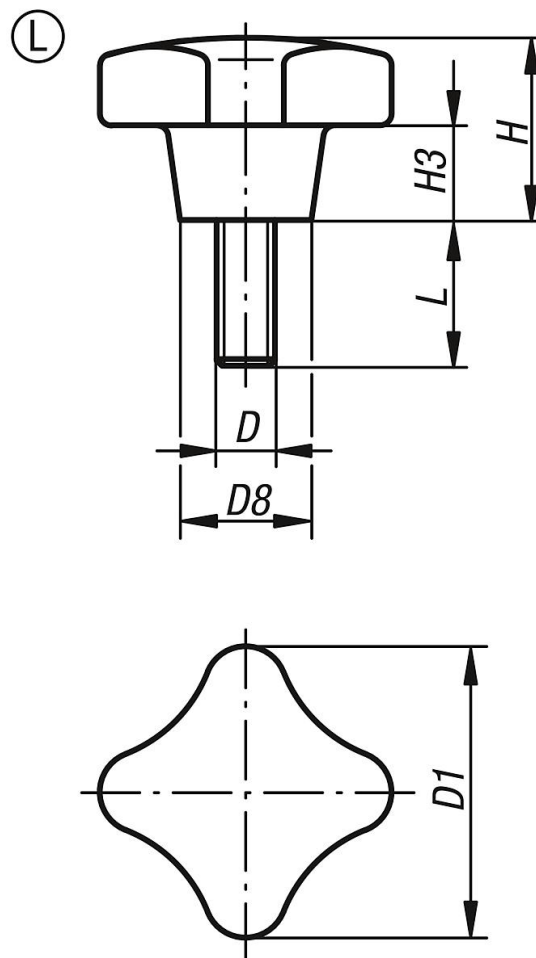
Plastique thermodurcissable PF 31 noir.

Boulon fileté : acier zingué.

Finition :

Poli finition miroir.

Dessins



Aperçu des articles

| Référence | Forme | D | D1 | D8 | H | H3 | L |
|--------------|-------|----|----|----|----|----|----|
| K0148.505X15 | L | M5 | 25 | 12 | 16 | 8 | 15 |
| K0148.505X20 | L | M5 | 25 | 12 | 16 | 8 | 20 |
| K0148.505X25 | L | M5 | 25 | 12 | 16 | 8 | 25 |
| K0148.505X30 | L | M5 | 25 | 12 | 16 | 8 | 30 |
| K0148.505X40 | L | M5 | 25 | 12 | 16 | 8 | 40 |
| K0148.505X50 | L | M5 | 25 | 12 | 16 | 8 | 50 |
| K0148.506X15 | L | M6 | 32 | 14 | 20 | 10 | 15 |
| K0148.506X20 | L | M6 | 32 | 14 | 20 | 10 | 20 |
| K0148.506X25 | L | M6 | 32 | 14 | 20 | 10 | 25 |

Ecrou croisillon similaire à DIN 6335, forme L avec filetage

Aperçu des articles

| Référence | Forme | D | D1 | D8 | H | H3 | L |
|--------------|-------|-----|----|----|----|----|----|
| K0148.506X30 | L | M6 | 32 | 14 | 20 | 10 | 30 |
| K0148.506X40 | L | M6 | 32 | 14 | 20 | 10 | 40 |
| K0148.506X50 | L | M6 | 32 | 14 | 20 | 10 | 50 |
| K0148.508X20 | L | M8 | 40 | 18 | 25 | 13 | 20 |
| K0148.508X25 | L | M8 | 40 | 18 | 25 | 13 | 25 |
| K0148.508X30 | L | M8 | 40 | 18 | 25 | 13 | 30 |
| K0148.508X35 | L | M8 | 40 | 18 | 25 | 13 | 35 |
| K0148.508X40 | L | M8 | 40 | 18 | 25 | 13 | 40 |
| K0148.508X45 | L | M8 | 40 | 18 | 25 | 13 | 45 |
| K0148.508X50 | L | M8 | 40 | 18 | 25 | 13 | 50 |
| K0148.510X20 | L | M10 | 50 | 22 | 32 | 20 | 20 |
| K0148.510X25 | L | M10 | 50 | 22 | 32 | 20 | 25 |
| K0148.510X30 | L | M10 | 50 | 22 | 32 | 20 | 30 |
| K0148.510X35 | L | M10 | 50 | 22 | 32 | 20 | 35 |
| K0148.510X40 | L | M10 | 50 | 22 | 32 | 20 | 40 |
| K0148.510X45 | L | M10 | 50 | 22 | 32 | 20 | 45 |
| K0148.510X50 | L | M10 | 50 | 22 | 32 | 20 | 50 |
| K0148.512X20 | L | M12 | 63 | 26 | 40 | 25 | 20 |
| K0148.512X30 | L | M12 | 63 | 26 | 40 | 25 | 30 |
| K0148.512X40 | L | M12 | 63 | 26 | 40 | 25 | 40 |
| K0148.512X50 | L | M12 | 63 | 26 | 40 | 25 | 50 |
| K0148.512X60 | L | M12 | 63 | 26 | 40 | 25 | 60 |